

LEASEHOLD - SHARE OF



Apartment

**FLAT 154, MARSHAM  
COURT MARSHAM  
STREET,  
WESTMINSTER,  
LONDON, SW1P 4LB**

Asking Price

**£435,000**

FEATURES



**TUCKERMAN**  
ESTATE AGENTS  
PROPERTY PROFESSIONALS

# 0 Bedroom Apartment located in London

A unique studio apartment located on the top floor (9th) of this prestigious development. Currently let and achieving a 4% yield.

Call us on

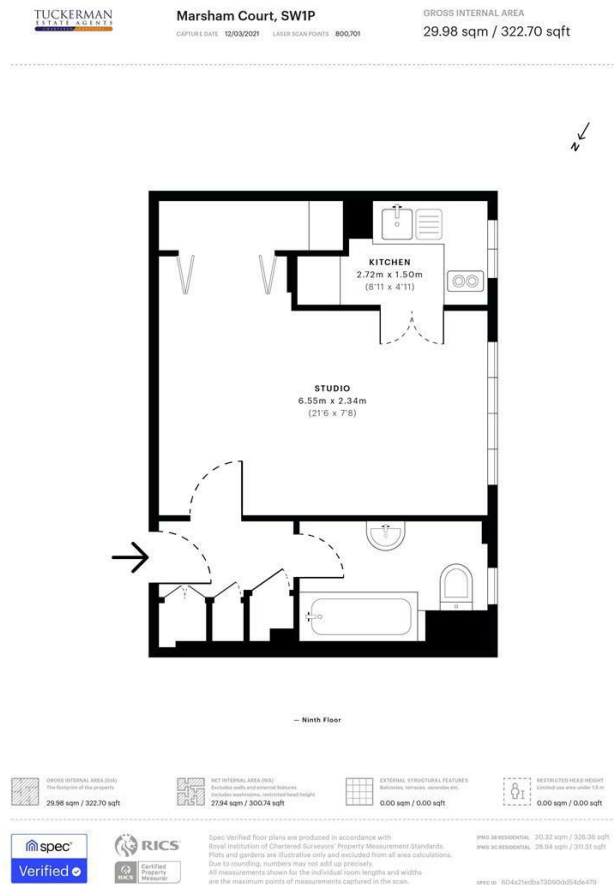
020 7222 5510

[info@tuckermanresidential.co.uk](mailto:info@tuckermanresidential.co.uk)

[www.tuckermanresidential.co.uk](http://www.tuckermanresidential.co.uk)

Council Tax Band

D



Energy Efficiency Rating		Current	Potential
<i>Very energy efficient - lower running costs</i>			
(92 plus) A			
(81-91) B			
(69-80) C			73
(55-68) D	55		
(39-54) E			
(21-38) F			
(1-20) G			
<i>Not energy efficient - higher running costs</i>			
<b>England &amp; Wales</b>		EU Directive 2002/91/EC	

Agents Note: Whilst every care has been taken to prepare these particulars, they are for guidance purposes only. All measurements are approximate and are for general guidance purposes only and whilst every care has been taken to ensure their accuracy, they should not be relied upon and potential buyers are advised to recheck the measurements.

**TUCKERMAN**  
ESTATE AGENTS  
PROPERTY PROFESSIONALS